

JLT PUBLIC SECTOR RISK REPORT



**statewide
mutual.**

*National snapshot through
the lens of local government*

Gary Okely
Head of Public Sector - Pacific
JLT Public Sector



2018



1. Financial
Sustainability



2. Theft & Crime



3. Reputation



4. Regulatory &
Statutory
Requirements



5. Environmental
Management



6. Assets &
Infrastructure



7. Disaster /
Catastrophic
Events

2018



1. Financial Sustainability



2. Theft & Crime



3. Reputation



4. Regulatory & Statutory Requirements



5. Environmental Management



6. Assets & Infrastructure



7. Disaster / Catastrophic Events

2019



1. Financial Sustainability



2. Cyber



3. Reputation



4. Disaster / Catastrophic Events



5. Climate Change / Adaptation



6. Assets & Infrastructure



7. Regulatory & Statutory Requirements

2018



1. Financial Sustainability



2. Theft & Crime



3. Reputation



4. Regulatory & Statutory Requirements



5. Environmental Management



6. Assets & Infrastructure



7. Disaster / Catastrophic Events

2019



1. Financial Sustainability



2. Cyber



3. Reputation



4. Disaster / Catastrophic Events



5. Climate Change / Adaptation



6. Assets & Infrastructure



7. Regulatory & Statutory Requirements

2020



1. Financial Sustainability



2. Assets & Infrastructure



3. Disaster / Catastrophic Events



4. Cyber



5. Reputation



6. BCP



7. Waste Management

2018



1. Financial Sustainability



2. Theft & Crime



3. Reputation



4. Regulatory & Statutory Requirements



5. Environmental Management



6. Assets & Infrastructure



7. Disaster / Catastrophic Events

2019



1. Financial Sustainability



2. Cyber



3. Reputation



4. Disaster / Catastrophic Events



5. Climate Change / Adaptation



6. Assets & Infrastructure



7. Regulatory & Statutory Requirements

2020



1. Financial Sustainability



2. Assets & Infrastructure



3. Disaster / Catastrophic Events



4. Cyber



5. Reputation



6. BCP



7. Waste Management

2021



1. Financial Sustainability



2. Cyber



3. Assets & Infrastructure



4. Disaster / Catastrophic Events



5. Reputation



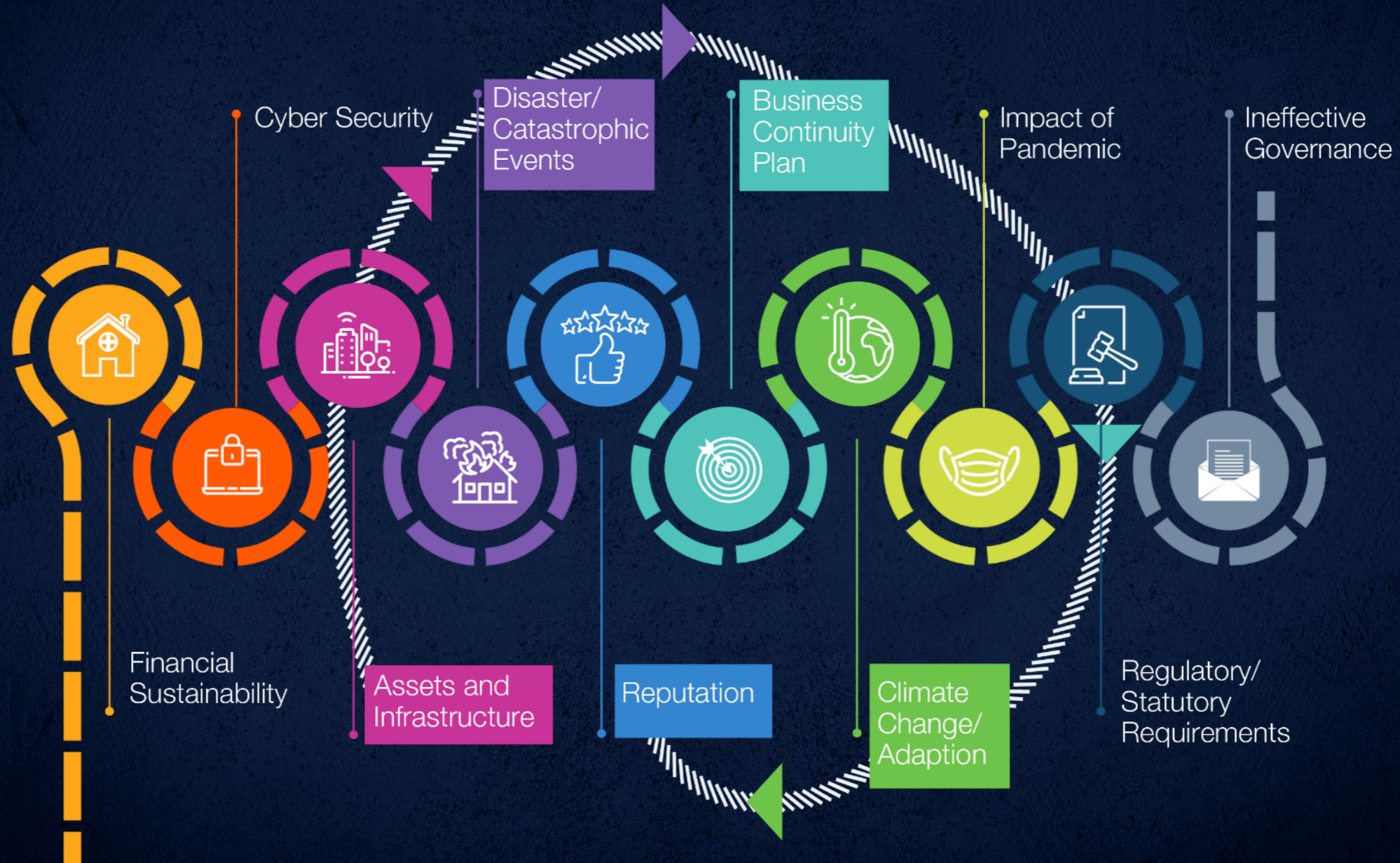
6. BCP



7. Climate Change / Adaptation

INTERCONNECTIVITY OF RISK

TOP RISKS IDENTIFIED BY LOCAL GOVERNMENT



TOP RISKS IDENTIFIED BY LOCAL GOVERNMENT

