

Wagga Wagga City Council

GWMC Presentation

Statewide Mutual Risk Management Conference

24 & 25 August 2023

Managing Fire Risk in Waste

Gregadoo Waste Management Centre

GWMC Site Details

- Located 14km south of CBD
- Established in 1985
- Expanded in 1992
- Regional landfill with transfer station



History

- Multiple cell and site fires from 2017 to 2020
- Response faults identified
- Improvement to equipment and practices identified
- Implementation of improvements to faults
- 2022 Statewide Audit of Site



The process

- Staff engagement
- Site surveillance
- Communication
- Response
- Notification & Records



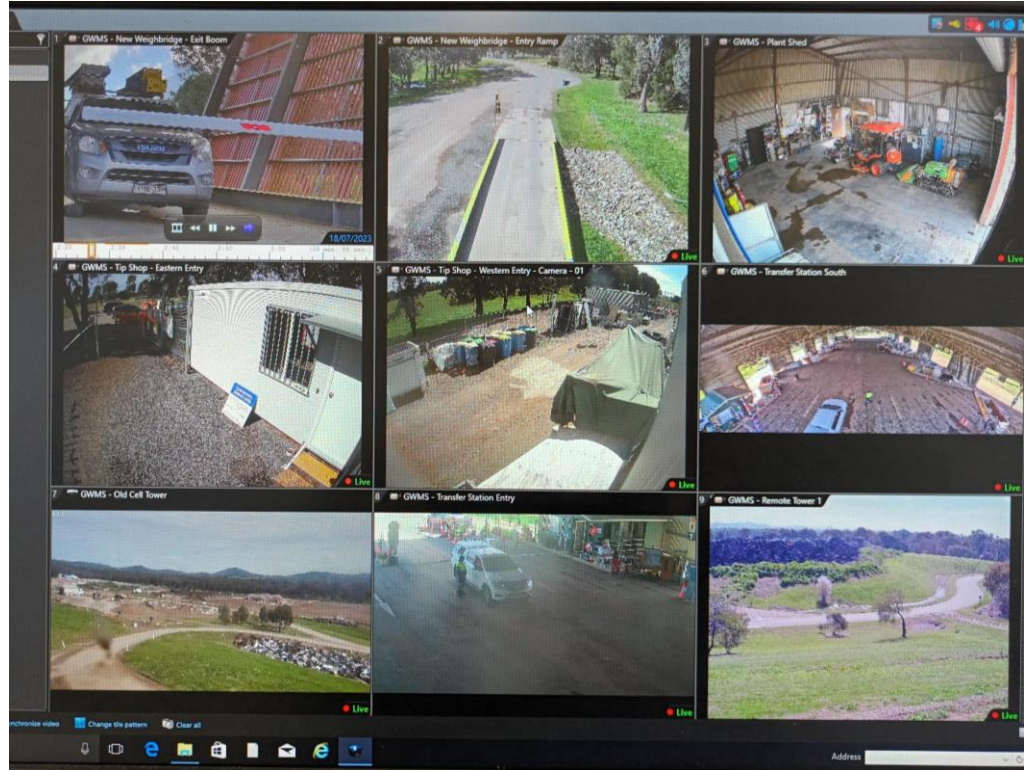
Staff engagement

- Staff knowledge and experiences
- Staff input into site Operating and Emergency Response Plans
- Site Equipment requirements to enable effective response



Site surveillance

- Operational Staff
- CCTV System Expansion
- Neighbours



Communication

- Staff to management
- Staff to staff site-wide communication
- Staff communication with contractors and commercial customers
- Staff with emergency agencies
- Staff with neighbours



Response

- Staff Training
- Emergency Response Plan & PIRMP
- Equipment and materials available on site
- Communication to and with outside agencies
- Cause of incident / Incident investigation



Notification & records

- All staff aware of emergency response procedure
- All incidents recorded
- Communication to weighbridge with details asap
- Site details for emergency services front of house
- Log of incidents kept and reviewed



Thank you!

If you have any questions please contact me:
ewings.greg@wagga.nsw.gov.au