



STATEWIDE MUTUAL
RISK MANAGEMENT CONFERENCE

22-23 August 2024

Leveraging AI for Preventative Maintenance



Phil King
Griffith City Council
Director Infrastructure & Operations



Asset AI[®]



A joint initiative between

TfNSW & IPWEA



Transport
for NSW



NSW & ACT

IPWEA

Asset AI®



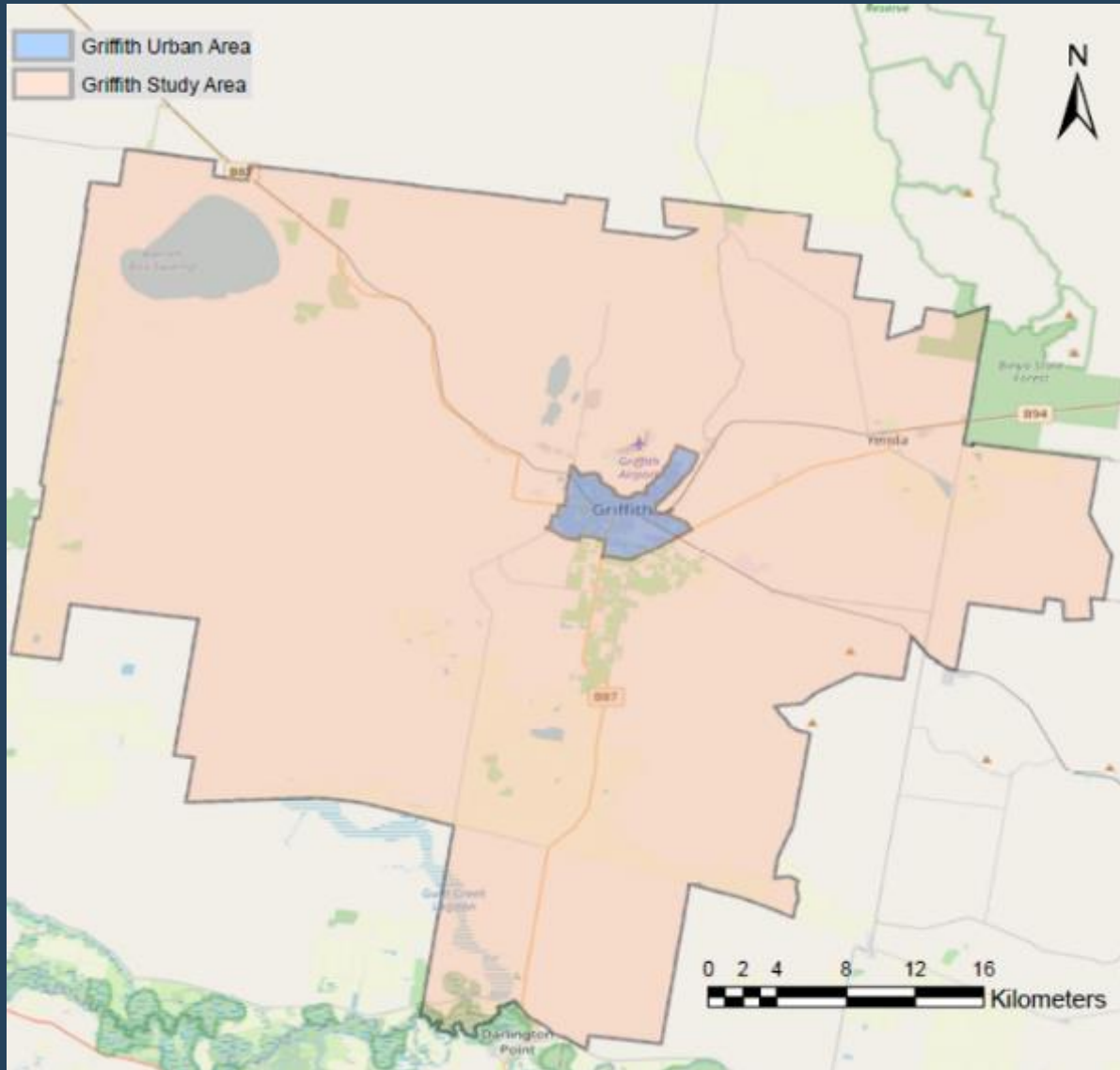
@







- Area 1,640km²
- Roads 1408km
- Urban 15% : Rural 85%
- Sealed 42% : Unsealed 58%



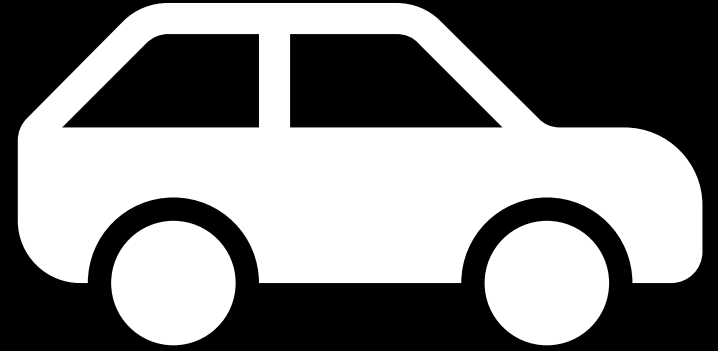
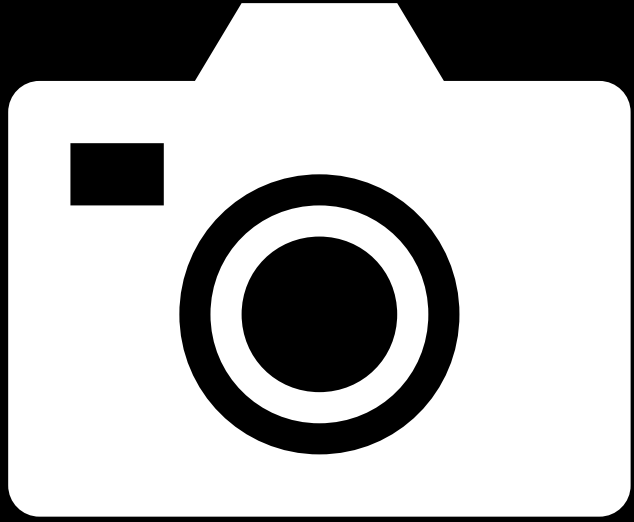
- Area 1,640km²
- Roads 1408km
- Urban 15% : Rural 85%
- Sealed 42% : Unsealed 58%

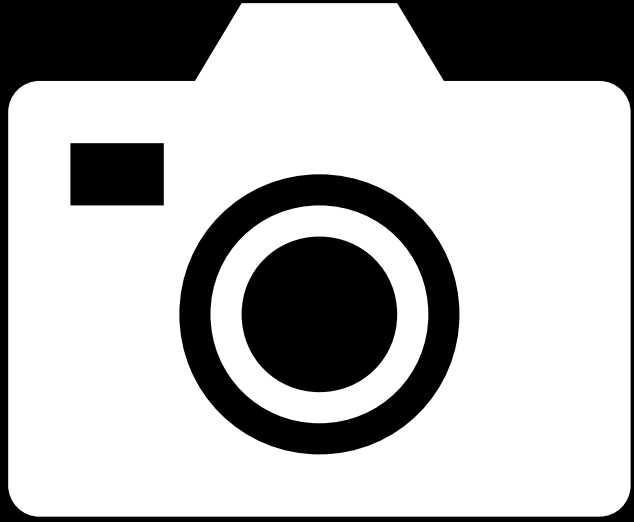


**In Griffith we used to drive
on the left hand side of the road**



Now we drive on what is left of the road







Retina Visions

VAISALA

Defects

Showing 8,483 of 8,483 defects.

Search by asset, defect type or ID Severity



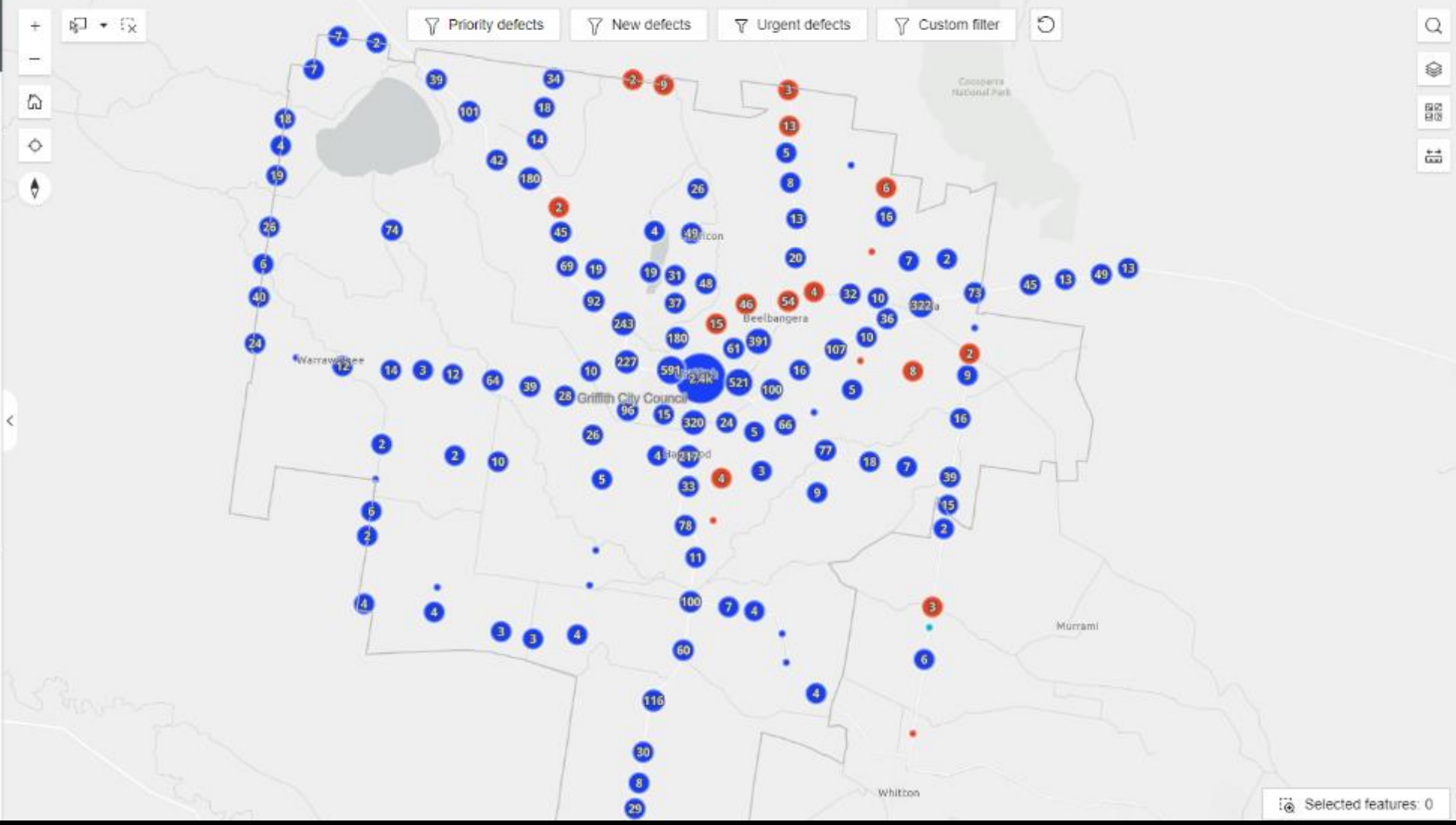
Flushing
 Pavement Group
 Wearing surface defect
 Road Hierarchy: Local Access
 Response time: 2 Weeks
 Remaining response time: Overdue
 Detected 5 - Severe



Flushing
 Pavement Group
 Wearing surface defect
 Road Hierarchy: Local Access
 Response time: 2 Weeks
 Remaining response time: Overdue
 Detected 5 - Severe



Flushing
 Pavement Group
 Wearing surface defect
 Road Hierarchy: Arterial
 Response time: 1 Day
 Remaining response time: Overdue
 Detected 5 - Severe



What did Asset AI[®] tell us?



Damaged steel safety barrier	0%
Damaged surface drain	0%
Edge break	4%
Graffiti	0%
Guidepost/reflector broken/missing/not reflective	3%
Longitudinal linemarking is defective	14%
Loose material on pavement surface	6%
Overflowing roadside bins/roadside litter	4%
Pavement cracking	13%
Pavement defect	4%
Poorly maintained landscaping	2%
Pothole	15%
Roadkill	0%
Tree branches	2%
Warning, speed or regulatory sign defective	1%
Wearing surface defect	30%

What did Asset AI[®] tell us?



Damaged steel safety barrier	0%
Damaged surface drain	0%
Graffiti	0%
Roadkill	0%

What did Asset AI[®] tell us?

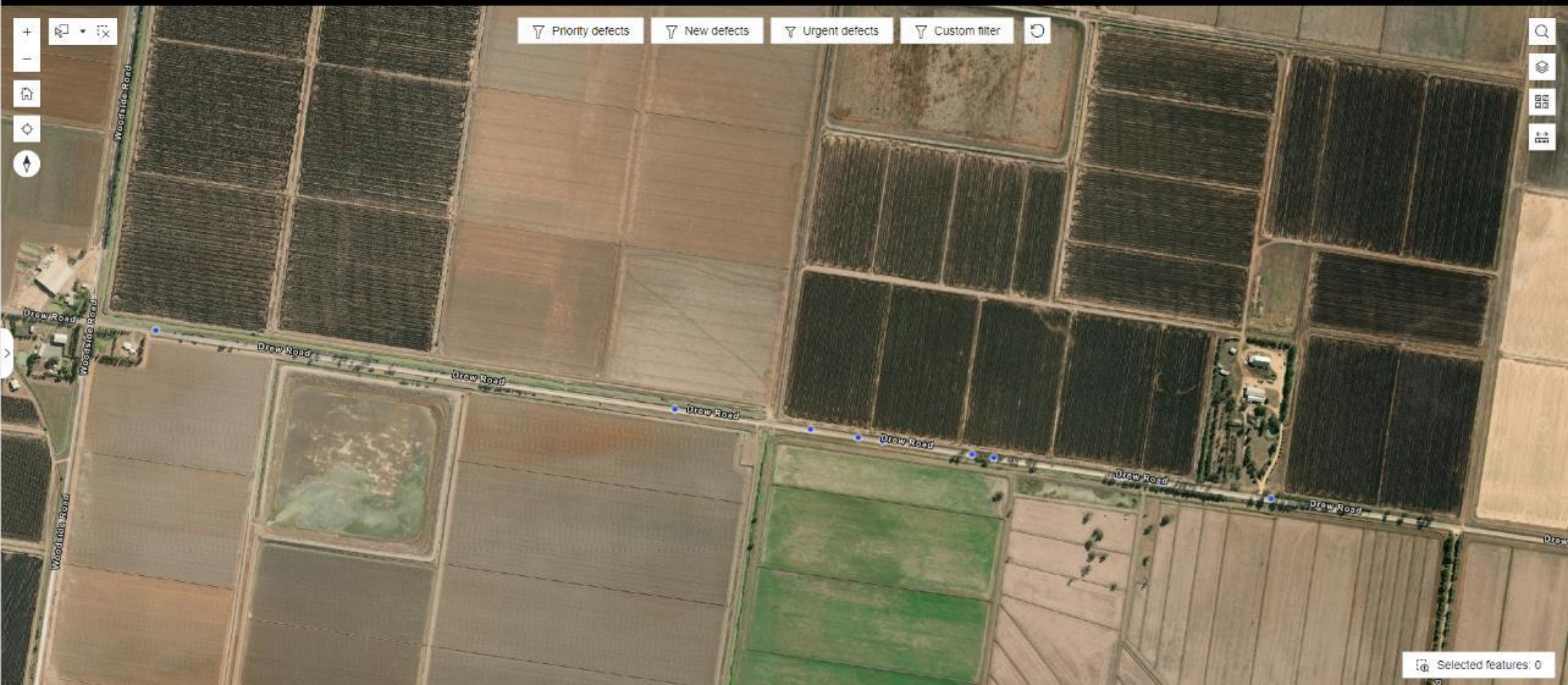


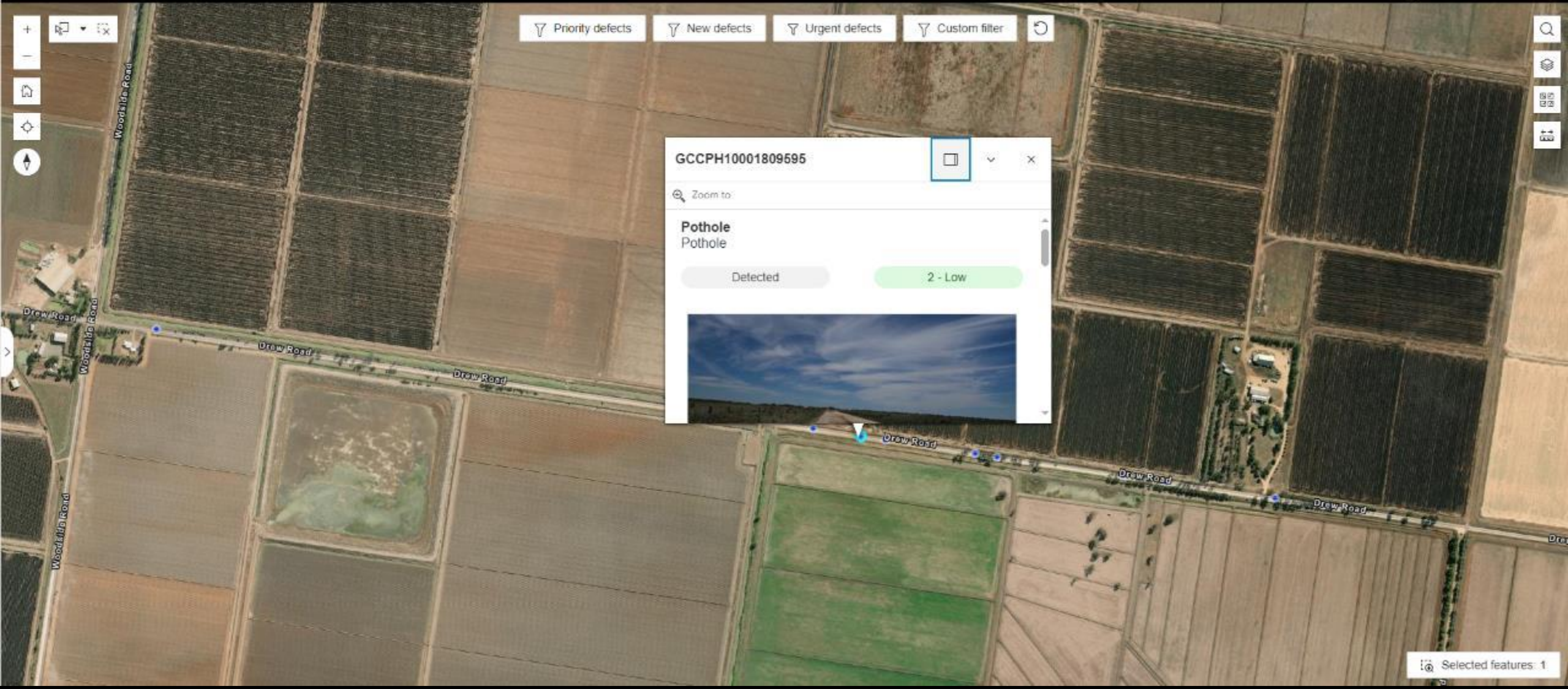
Edge break	4%
Guidepost/broken/missing/not reflective	3%
Loose material on pavement surface	6%
Overflowing roadside bins/roadside litter	4%
Pavement defect	4%
Poorly maintained landscaping	2%
Tree branches	2%
Warning, speed or regulatory sign defective	1%

What did Asset AI[®] tell us?



Longitudinal linemarking is defective	14%
Pavement cracking	13%
Pothole	15%
Wearing surface defect	30%





Priority defects New defects Urgent defects Custom filter

GCCPH10001809595

Zoom to

Pothole
Pothole


Detected 2 - Low

GCCPH10001809595

Zoom to

Pothole
Pothole

Detected **2 - Low**



Defect details

Road hierarchy	Local Access
Recommended response time	1 Month
Response time remaining	Overdue
Last detection date	07/02/2024, 12:48:39
First detection date	07/02/2024, 12:48:39
Number of times detected	2
Defect status trend	Stable
Original detection severity	2 - Low
Segment road quality score	0.00

Location

Road segment name	DREW ROAD
-------------------	-----------

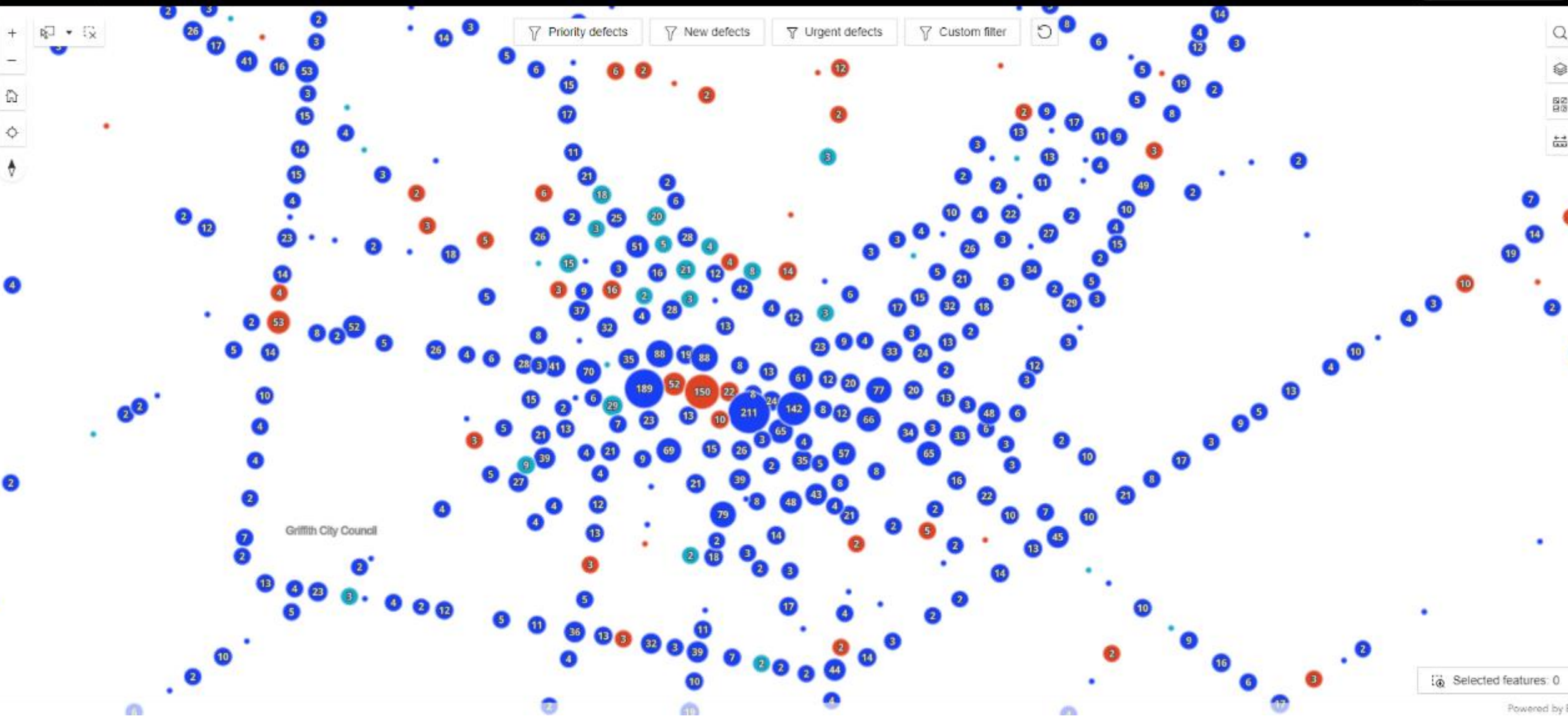
Notes

Comments	
----------	--

Map navigation controls: zoom in (+), zoom out (-), home, location, and compass.

Filter buttons: [Priority defects](#) [New defects](#) [Urgent defects](#) [Custom filter](#) [Refresh](#)

Map tool icons: search, layers, full screen, and data view.



Selected features: 0

How do you know...



How do you know...

Where your road defects are?



How do you know...

Where your road defects are?
How bad they are?



How do you know...

Where your road defects are?

How bad they are?

When they will be fixed?





Hold on Jackthe council are on their way .





2 YARRAN WINERY

COCOPARRA NATIONAL PARK

Yarra 1



KEEP LEFT